






sheet system

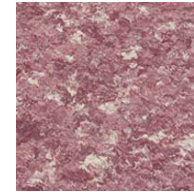
ecoval tx

- Sheets and tiles
- Suitable for heavy traffic areas
- Extreme durability
- Textured or matt surface finish
- Low VOC certified material
- CA 01350 compliant
- May contribute with points to LEED program
- Free of PVC and halogens
- Cigarette burn resistant
- 10 colors

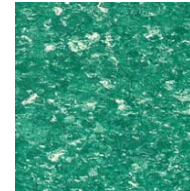
rubber flooring for heavy traffic areas, with textured surface and white contrasting granules design



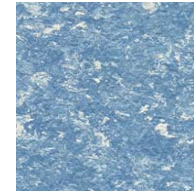
Art.				
2114-01		50 x 50 cm	20 units	
2114-02	 Homogeneous	61 x 61 cm	20 units	3.6 kg/m ²
2114-03		1.12 x 12 m≅	1 sheet	



0150 | BOREAL



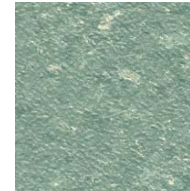
0146 | VERDE ALGA



0144 | CRISTAL



0142 | GRIS ESPACIAL



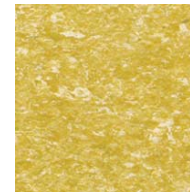
0155 | CAMPUS



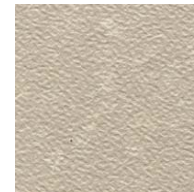
0156 | LAGO



0157 | LUMINA



0154 | SOLAR



0158 | NATURAL



0149 | BEIGE DUNA